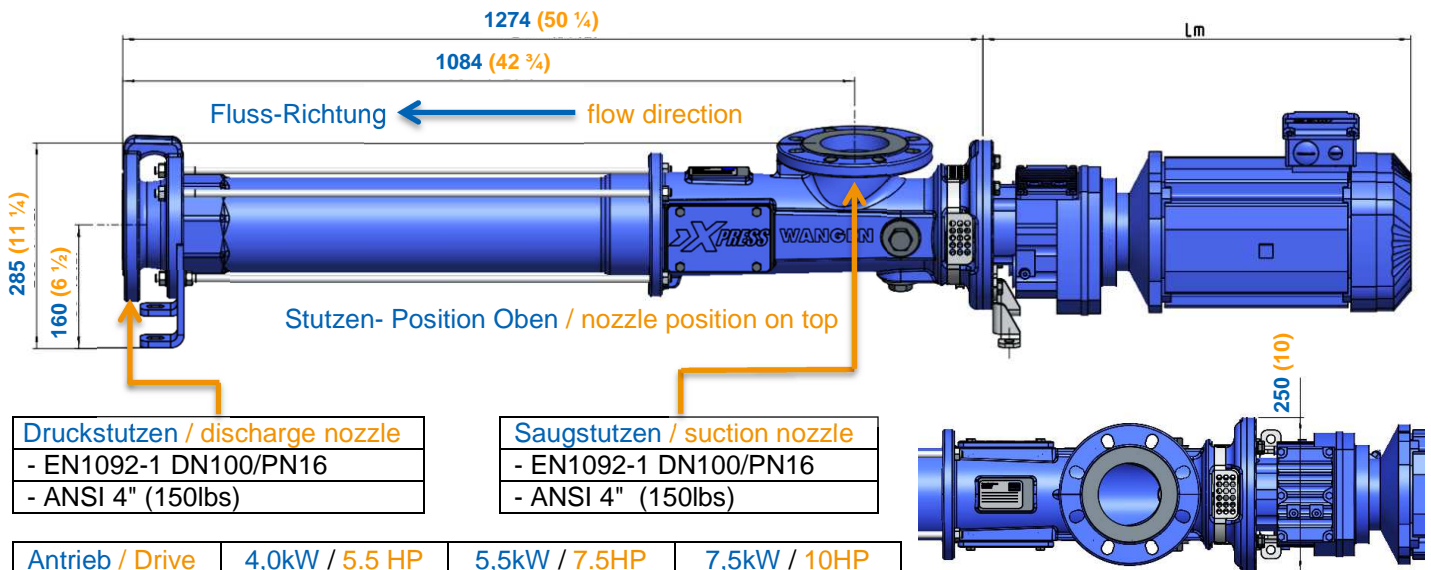


Wangen Xpress 64 – Technische Daten / technical data

Pumpenabmessungen / pump measurement



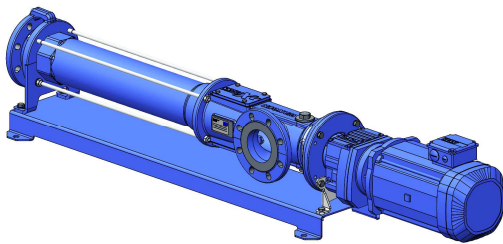
Druckstutzen / discharge nozzle
 - EN1092-1 DN100/PN16
 - ANSI 4" (150lbs)

Saugstutzen / suction nozzle
 - EN1092-1 DN100/PN16
 - ANSI 4" (150lbs)

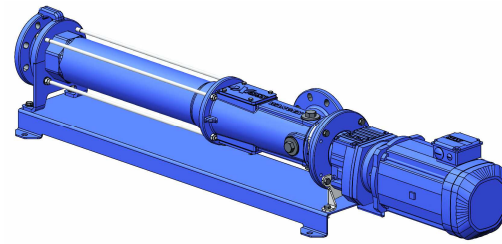
Antrieb / Drive	4,0kW / 5.5 HP	5,5kW / 7.5HP	7,5kW / 10HP			
Lm (mm / inch)	578	23.1	634	25	646	25.4

Bei den angegebenen Maßen ist DIN ISO 2768-1 v zu berücksichtigen./ According to DIN ISO 2768-1 v on all dimensions.

Weitere Stutzen- Positionen / further nozzle positions



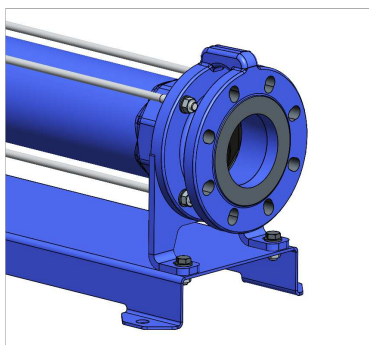
Stutzen- Position Links / nozzle position left hand



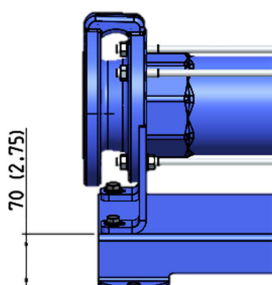
Stutzen- Position Rechts / nozzle position right hand

Max. Gesamtmasse / max. total mass: 196 Kg / 431 lbs

Optionen / options



Grundplatte / base plate



Kennlinie / head curve

