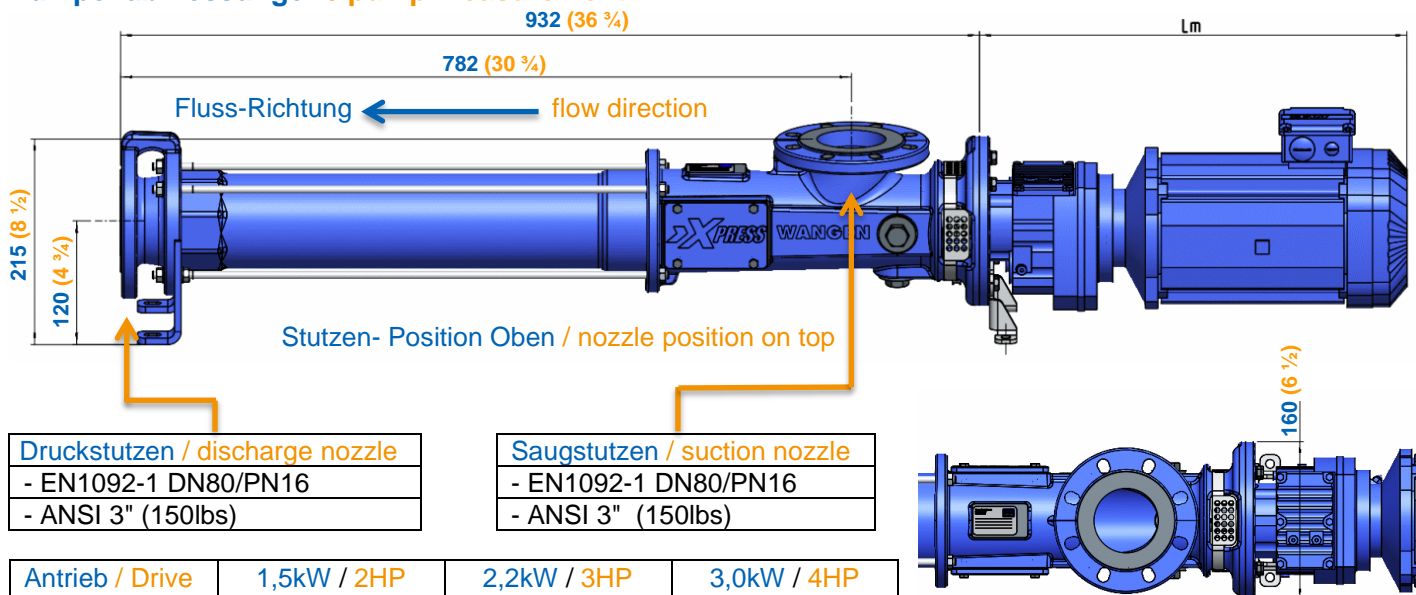


# Wangen Xpress 48 – Technische Daten / technical data

## Pumpenabmessungen / pump measurement



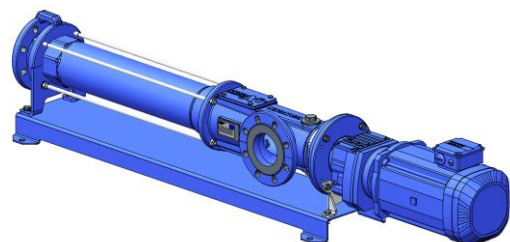
<b>Druckstutzen / discharge nozzle</b>
- EN1092-1 DN80/PN16
- ANSI 3" (150lbs)

<b>Saugstutzen / suction nozzle</b>
- EN1092-1 DN80/PN16
- ANSI 3" (150lbs)

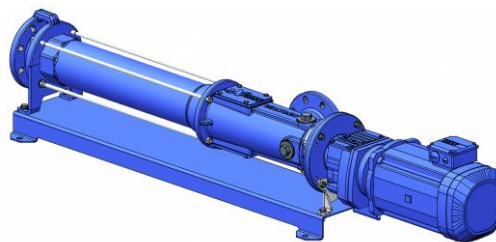
<b>Antrieb / Drive</b>	1,5kW / 2HP	2,2kW / 3HP	3,0kW / 4HP			
<b>Lm (mm / inch)</b>	457	18.0	453	17.8	503	19.8

Bei den angegebenen Maßen ist DIN ISO 2768-1 v zu berücksichtigen./ According to DIN ISO 2768-1 v on all dimensions.

## Weitere Stutzen- Positionen / further nozzle positions



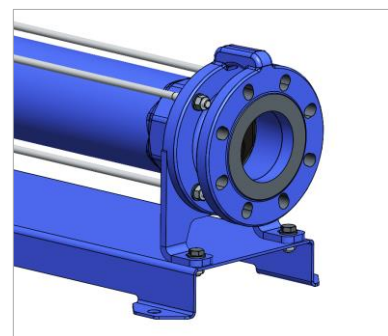
Stutzen- Position Links / nozzle position left hand



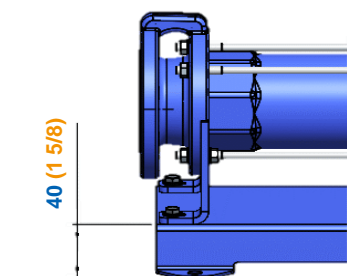
Stutzen- Position Rechts / nozzle position right hand

Max. Gesamtmasse / max. total mass: 126-142 Kg / 278-313 lbs

## Optionen / options



Grundplatte / base plate



## Kennlinie / head curve

